

GSD INDUSTRIAL CO., LTD.

SRP

沉水式回流泵



川源股份有限公司



用途

SRP系列沉水式回流泵是在潜水搅拌机生产技术基础上开发出的产品，该泵为二级污水处理厂混合液回流、反硝化脱氮除磷的专用设备，并可用于地面给排水工程中需要微扬程、大流量场所。

APPLICATIONS

The submersible reflux pump of Model SRP series is a product developed on the basis of the production technique of submersible mixers, it is a special equipment used for the reclamation of the mixed liquids, denitrification, denitridation and nitrogen removal in Class II sewage treatment plant and also used in the locations which require low lift and large discharge in the ground surface water supply or drainage projects.

使用条件

- 1.连续运行时，介质温度不高于40℃；
- 2.介质pH值为5-9；
- 3.最大潜没深度10m。

USAGE CONDITIONS

1. The temperature of the media shall not be higher than 40°C during the continuous operation.
2. The pH value of the media shall be 5-9.
3. The maximum depth of submersion shall be 10m.

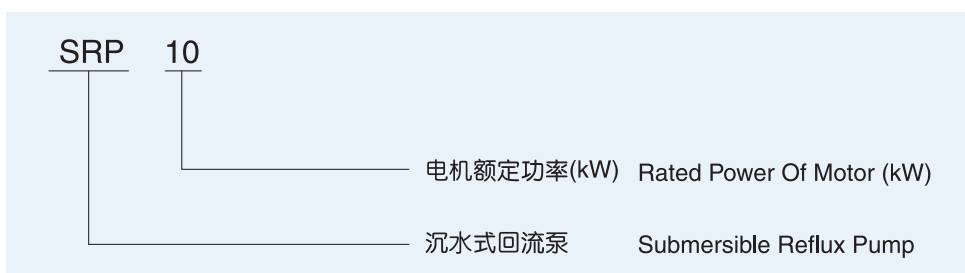
特点

- 1.按照微扬程、大流量的工作模式特别设计。
- 2.主机采用不锈钢冲压成型结构，水力性能好，效率高。
- 3.一体化吊装设计，可实现在水下快速安装。
- 4.采用双重机械密封和多重电机保护功能，提高运行可靠性。

FEATURES

1. Special design is made to the operating mode of short lift and large discharge.
2. The main equipment employs the stainless structure of the punched components, resulting in very good hydraulic performance and high efficiency.
3. The integrated installation design can realize the quick underwater installation.
4. The dual mechanical sealing arrangement and a multiple of electro-mechanical protective function will improve operating reliability.

型号说明 TYPE DESCRIPTION



性能参数 PERFORMANCE PARAMETERS

型 号 TYPE	电机功率 MOTOR POWER (kW)	额定电流 CURRENT RATING (A)	叶轮直径 DIA. OF IMPELLER (mm)	防护等级 DEGREE OF PROTECTION	绝缘等级 INSULATION CLASS	公称直径 NOMINAL DIA. (mm)
SRP1.5	1.5	5.2	400	IP68	F	400
SRP2.5	2.5	7	400	IP68	F	400
SRP4	4.0	14	620	IP68	F	600
SRP5	5.0	19	620	IP68	F	600
SRP7.5	7.5	28	620	IP68	F	600
SRP10	10.0	32	620	IP68	F	600

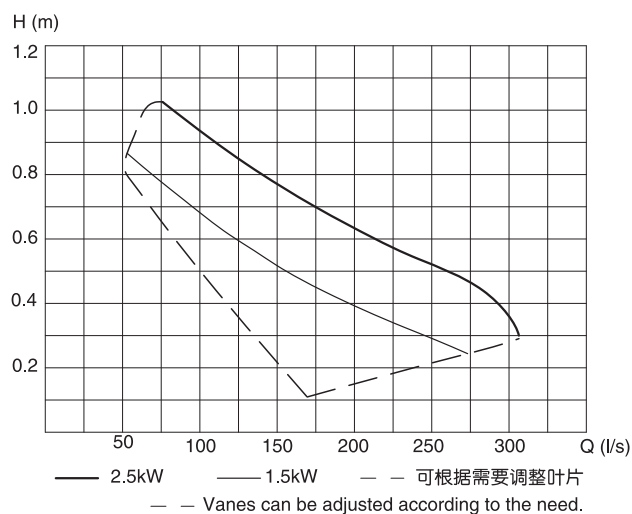


性能曲线 PERFORMANCE CURVES

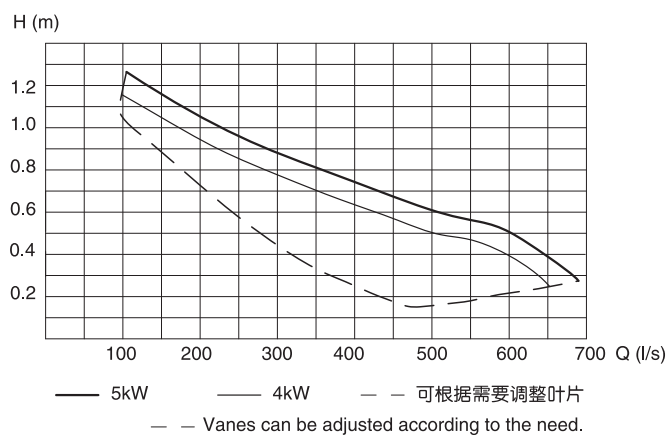
此曲线为泵的特性曲线，不包括扩散管和进出口的损失。

The curves are the characteristic curves of the pump, not including the loss of the diffusing tubes as well as the inlet and outlet.

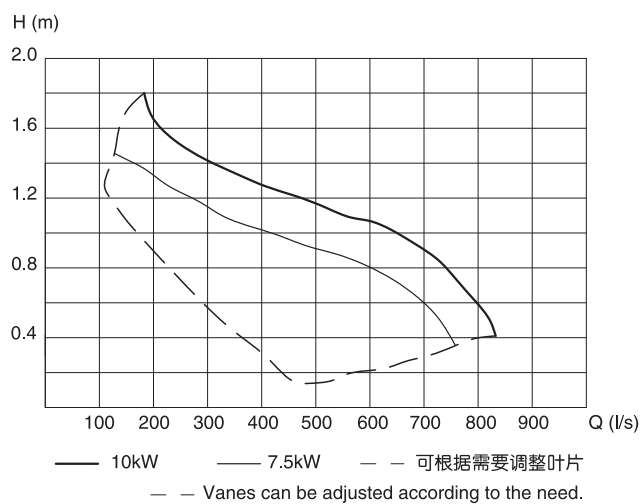
SRP1.5 SRP2.5



SRP4 SRP5



SRP7.5 SRP10

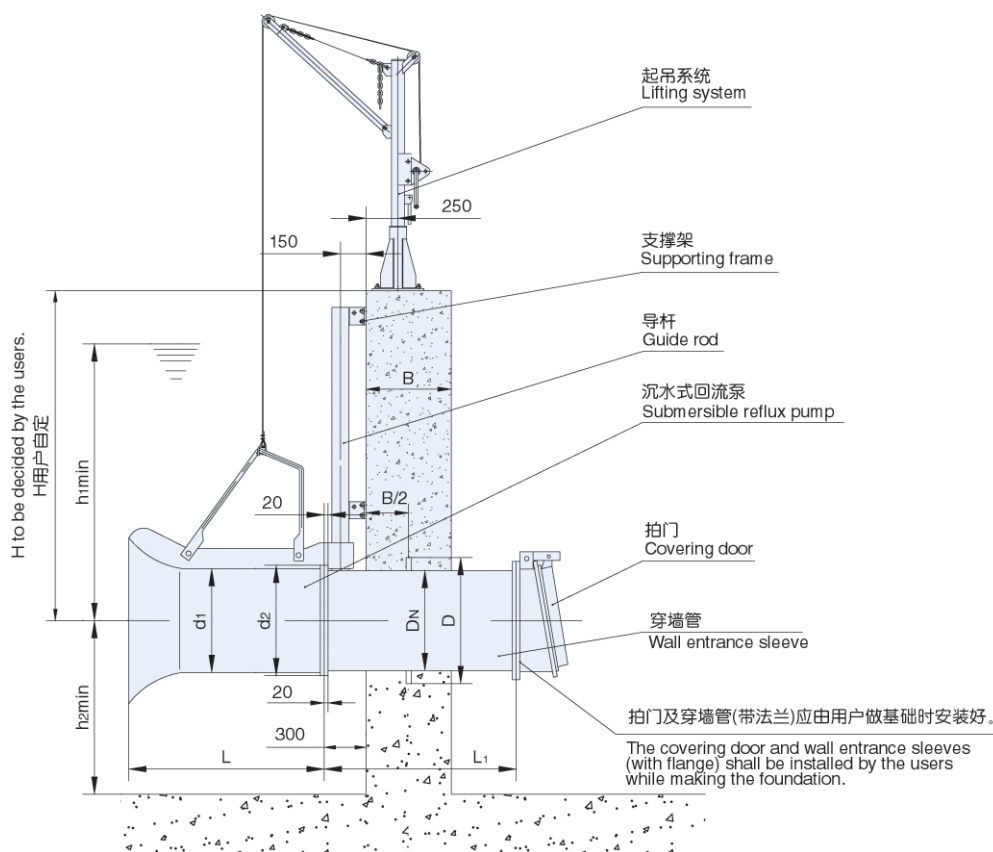


安装

特别提醒用户正确安装使用是该泵长久、正常运转的基本保证。沉水回流泵采用自动耦合安装系统, 不用任何机械拆卸便可迅速提升, 方便快捷。本设备除了穿墙管需预埋外, 导杆、起吊杆用膨胀螺栓与池体连接, 不需预埋件。预埋件和拍门由用户自行采购安装, 回流泵有水平安装和垂直安装两种方式供用户选择。

INSTALLATION

Special Warning to the Users: The correct installation and usage is a basic guarantee to the long-term and normal operation of the pump. The submersible reflux pump employs the automatic coupling installation system, which facilitates quick elevation without any mechanical dismantling, hence the convenience and quickness. Apart from the wall entrance sleeves that require pre-embedding, the guide rod and lifting rod of the present equipment are to be connected with the pond wall with the use of expansion bolts without the need of any other pre-embedded parts. The pre-embedded parts and the covering door shall be purchased and installed by the users. The reflux pump can be installed either horizontally or vertically, a choice to be made by the users.



型号 Type	d ₁	d ₂	D	D _N	L	h ₁	h ₂	B	L ₁
SRP1.5	406	480	600	400	680	750	350	≥ 380	由用户确定 To be decided by the users.
SRP2.5	406	480	600	400	680	750	350	≥ 380	
SRP4	632	710	800	600	930	1200	550	≥ 450	
SRP5	632	710	800	600	930	1200	550	≥ 450	
SRP7.5	632	710	800	600	980	1200	550	≥ 450	
SRP10	632	710	800	600	980	1200	550	≥ 450	